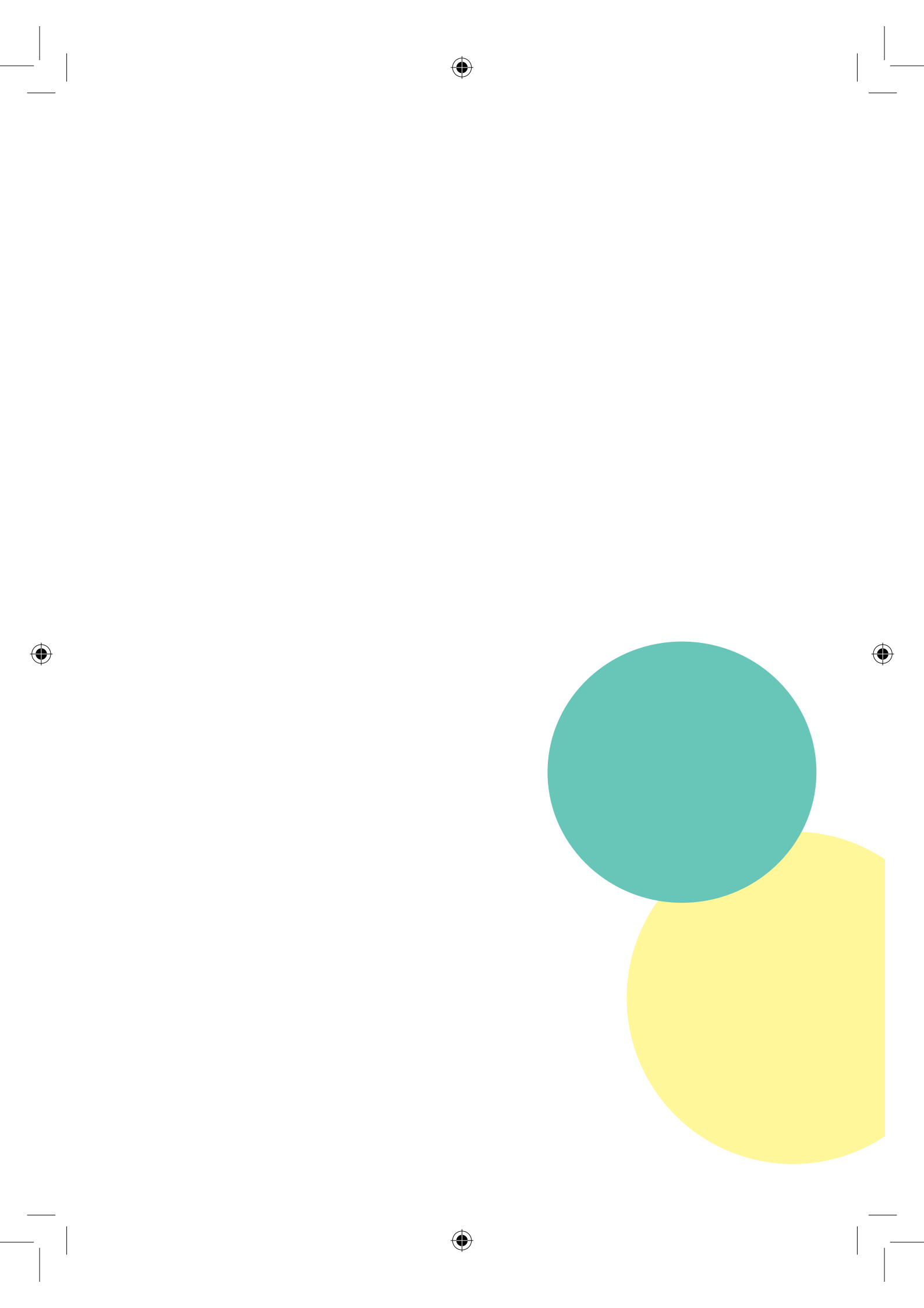


Student Handbook

Wilds Lodge School





HELLO

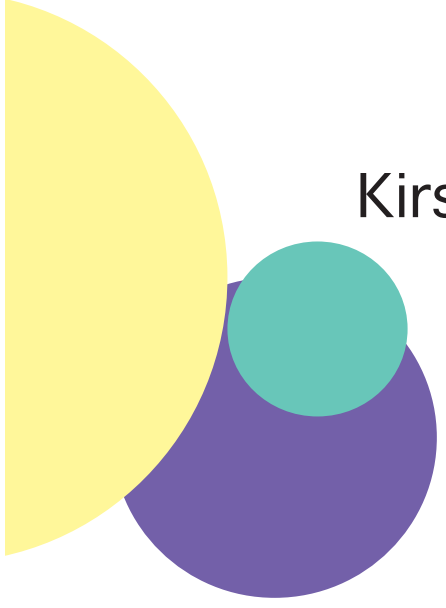
This booklet explains how we look after your wellbeing both in and out of the classroom. It also gives advice on what to do if you have any worries or anxieties. There is a strong network of teaching, Care, Therapy and Pastoral support, this starts with your class teacher and with your key worker if you are a boarding student.

Enjoy your time in school, we want you to achieve the best you can by all the means you can, to make your life and the life of the school a more fulfilling place for everyone.

If you feel you, or your family, would like to talk with us about anything, please do, we look forward to talking with you.

Kind Regards

Kirsty Lamb and Emma Mills
Co Heads



Welcome

Welcome to Wilds Lodge School. There is much to learn about a new school, and this booklet is designed to provide you with the information you will need to get started at the beginning of your time at Wilds Lodge.

The staff and students will do all they can to help you feel comfortable in your new surroundings so that you will be confident about joining in and contributing to the many aspects of life in the school.

Everyone in school takes pride in the achievements of others as much as their own success. Please make the most of what is on offer from the very start, and begin your career at Wilds Lodge with an open mind, a willingness to help and the intention to achieve your best.

Are you boarding?

Boarders are encouraged to see their boarding house as their home, from which they come to school each day. As they move up the school, boarders are given more responsibility in the running of the house and organisation of their own needs; with this responsibility comes increased freedom in the use of free time and arrangements for their personal and social learning.

Our School works best when these freedoms and responsibilities are balanced with supportive interventions from care, therapy and education.

The care team are managed by:

**Matthew Fogg - Head of Care
and
Becky McSharry - Deputy Head of Care**

Both Matt and Becky can be contacted by yourself, parents or carers on the office number:
01780 767254



Each residential house has its own sitting room, games room, kitchen and bedrooms. Care staff will support all boarders and work with you and your family, show you how the house is run and what is expected of you. They will also keep in regular contact with your family.

THE BUNGALOW



7



THE LODGE





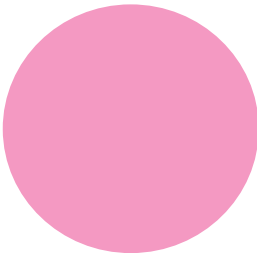
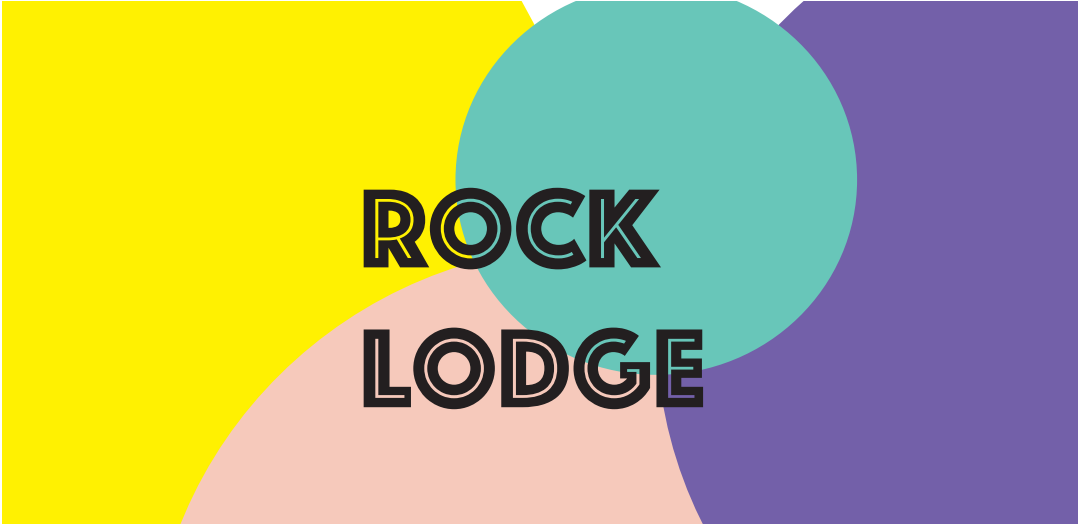
THE LOFT





CROSSROADS







I wish i'd known...

We asked our existing students what they wish they had have known when they started at school...

Can I call home?

If you would like to call home, that's fine - you can do so using our school phones or your own device.

Do I get use of the internet at school?

Yes, with parental consent.

Is it ok to have personal photographs with me at school?

Yes, we want you to feel at home whilst you're here.

Do I wear school uniform?

Yes, all pupils are expected to wear our school uniform other than our Post 16 students.

What time is dinner?

Most houses will have dinner around 5pm depending on evening activities.

What time am I expected to get up in the morning?

The care staff will wake you up at approximately 8am.







WGS



Keeping Safe

To keep safe in our school we have a few important rules and guidelines to follow:

- 1) Show tolerance and respect towards other people. Bullying, racism and sexism will not be accepted in any form.
- 2) Help create an atmosphere in which everyone can live and learn peacefully and effectively.
- 3) Move around school sensibly and with regard to the wishes and needs of other people.
- 4) Keep the buildings and grounds clean, tidy and welcoming.
- 5) Respect other peoples property.
- 6) Consider our reputation when you are out of school. Everybody at Wilds Lodge is judged by your behaviour.

Each person in this school has a right to freedom from discrimination, and school will actively support each individual persons needs.

If you feel that you would like some help or would like to talk to someone about anything you can speak to any memeber of staff or your Local Authority Advocate, these numbers are located on your house groups.

15

We will offer you every support and guidance you may need to help you succeed and enjoy your experience with-in our school. We will integrate the care, therapy and education you may need to make your time with our school as successful as possible.

If you need additional contact with staff that may be able to help - please contact:

Emma Mills - Co-Head

Kirsty Lamb - Co-Head

Paul Seragusa - Assistant Head

Peter Wilkinson (Wilks) - Head of School Support

They can be contacted by yourself, parents or carers on the office number: **01780 767254**

Within the school day you will also receive guidance and support from our pastoral team, Chris, Errol, Alex, Olly and of course Luna our gorgeous Pastoral dog.

If you are finding the academic day a struggle, please do not worry; ask your teacher or TA for some time out of class to discuss your fears or anxieties with our pastoral team. They will often encourage you to work individually with support from other staff to help you regulate your feelings and return successfully to the class group.

The therapy team will provide support and guidance and if needed individual therapy sessions to help you understand your world.

We also have a school nurse - Roxy and Health Care Assistant - Jody



Therapy at Wilds

Having an incredible therapy team here at Wilds means we are able to offer therapy to our students and we will find the one that suits you!

Art - Play - Drama - Music
Animal Assisted

Meet the team:



Abi



Mandy



Jade



Erica



Tracey

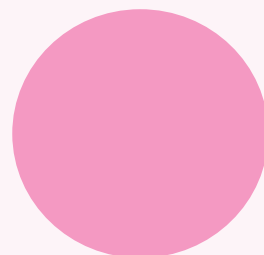


Maeve

Day to day at Wilds Lodge



9am House Meeting
9.15 am Lesson 1
10 am Lesson 2
10.40 am Break Time
11 am Lesson 3
11.45 am Lesson 4
12.30 pm Lunch
1.30 pm Lesson 5
2.20 pm Break time
2.40 pm Lesson 6
3.30 End of day



**We believe in
having memorable
and enjoyable
experiences at
school and have a
number of exciting
events each year!**



Once a year in the summer
the entire school goes on a
trip to the seaside.



Sports day and the music festival are really good fun and we would love you to take part in them!

We want to keep you safe

To support our students we have a team of safeguarding staff that you can talk to:

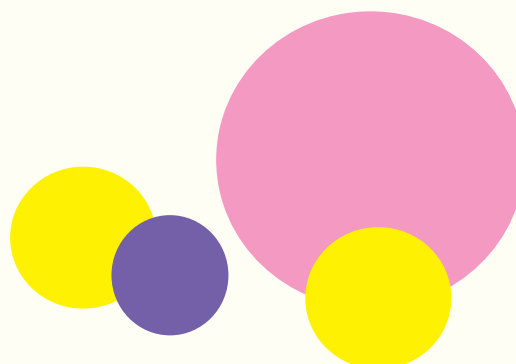
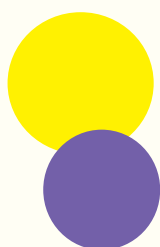
Dominic Seamer
Head of Education



Emma Mills
Co Head



Matthew Fogg
Head of Care



Kirsty Lamb
Co Head and Safe-
guarding Lead



Peter Wilkinson
Head of School Support



Paul Seragusa
Assistant Head



Mary Rennie
Head of Parent Liaison



The safeguarding team are also supported by the SLT (School Leadership Team):

Liz Cliffe - Estate Manager
Dominic Seamer - Head of Education
Ed McDonald - Head of KS3
Adele Chisholm - Educational Psychologist
Abi Thomson - Head of Therapy
Becky McSharry - Deputy Head of Care

You may also find these numbers helpful:

Childline: **08001111**
Childrens Commissioner: **0800 5280731**

Do you have something to say?

Pupil comment boxes are located on all three sites. Please feel free to use them to make suggestions, raise concerns or share your thoughts with us. You can tell us who you are or choose not to.

These are located in:
Wilds Lodge - Theatre Lobby
Crossroads - Entrance Hall
Rock Lodge - Entrance Hall

We also have a link on the school website or a digital QR code around school where you can post any concerns to the Safeguarding Team.

The Internet:

In the school day and evening our students have the facility to access the internet on school computers, tablets and mobile phones. Each session will be supervised and monitored.

Students will be asked to sign a user agreement before they are given access.

Personal ICT resources and mobile phones:

It is essential that parents/carers insure expensive equipment, as the school cannot accept any responsibility for any loss or damage. The school insists upon responsible use of the internet at all times and if we are made aware of any safeguarding, hacking, radicalisation or other inappropriate use we will refuse access to personal equipment on the school site.

It is essential that:

All communication devices are password protected.

Students hand equipment to staff to take care of during the school day and overnight.

When devices are with students they are their responsibility.

